

# Zurich Engineering Inspection Services Ireland Limited (ZEIS)



Thorough examinations  
and inspections  
required under  
inspection policies.



All the inspections completed under an inspection policy fall under the following regulations:

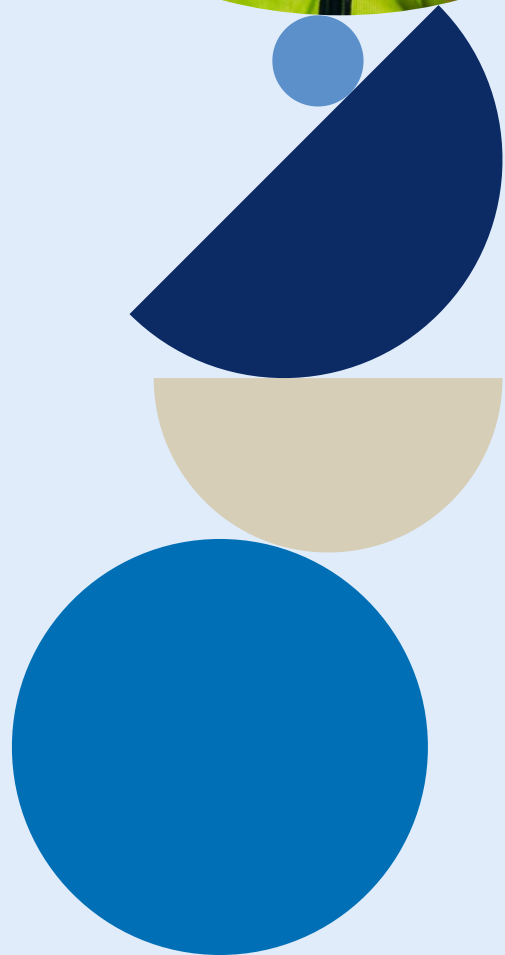
Safety, Health and Welfare (General applications) Regulations 2007.

This includes all the lifting equipment inspections under Regulation 52 (Examination and Testing of Lifting Equipment).

Also included under the same regulations are inspections under Regulation 30 (Inspections of Work Equipment).

A further amendment was added in 2012 – Safety, Health and Welfare at Work (General Application) (Amendment S I No 445 of 2012) – This updated the legislation to include the pressure equipment.

The following is a list (not exhaustive) of equipment in areas with the specific legislation it falls under and the frequency of the inspection requirement.



## Landlords/Property Owners

- Passenger Lifts (Reg 52) 6 Monthly
- Service Lifts (Reg 52) 6 Monthly
- Runway Tracks (Reg 52) 6 Monthly
- Escalators (Reg 30) 6 Monthly
- Roof Access Equipment (Reg 52) 6 Monthly
- Air receivers (Pressure Amendment) 26 Monthly
- Hot Water Boilers (Reg 30) 26 Monthly
- Refrigeration Systems - over 25KW (Pressure Amendment) 26 Monthly
- Pressure Vessels (Reg 30 or Pressure Amendment – it depends on the property) – frequency would depend on the type
- Dock Levellers (Reg 30) 12 Monthly

## Healthcare Risks

All equipment under Landlords but including:

- Patient Hoists (Reg 52) 6 Monthly
- Patient Slings (Reg 52) 6 Monthly
- Tail Lifts (Reg 52 if over 1.2m, Reg 30 if under) 6 Monthly
- Autoclaves (Pressure Amendment) 14 Monthly

## Garages/Workshops

- Vehicle Lifts (Reg 52) 12 Monthly
- Trolley Jacks (Reg 52) 12 Monthly
- Bottle Jacks (Reg 30) 12 Monthly
- Engine Cranes (Reg 52) 12 Monthly
- Axel Stands (Reg 30) 12 Monthly
- Air receivers (Pressure Amendment) 26 Monthly

## Manufacturing Risks

- Overhead Cranes/Carriages (Reg 52) 12 Monthly
- Lifting Tackle – Slings/Chains etc (Reg 52) 6 Monthly
- Fork Lifts/Order Pickers (Reg 52) 12 Monthly - Unless they have attachments for lifting people then 6 Monthly
- Dock Levellers (Reg 30) 12 Monthly
- Roller Doors (Reg 30) 12 Monthly
- Mobile Elevated Work Platforms (Reg 52) 6 monthly
- Steam Boilers (Pressure Amendment) 14 Monthly
- Steam Receivers (Pressure Amendment) 26 Monthly
- Air Receivers (Pressure Amendment) 26 Monthly
- Refrigeration Systems above 25 KW (Pressure Amendment) 26 Monthly
- Refrigeration Systems below 25 KW (Reg 30) 26 Monthly

## Construction Equipment

- Tower Cranes (Reg 52) 12 monthly or whenever moved
- Mobile Cranes (Reg 52) 12 Monthly – Unless have attachments for lifting people so 6 Monthly
- Excavators (Reg 30) 12 Monthly
- Dump Trucks (Reg 30) 12 Monthly
- Lifting Tackle (Reg 52) 6 Monthly
- Mobile Elevating Work Platforms (Reg 52) 6 Monthly
- Construction Hoists (Reg 52) 12 Monthly



## Why choose Zurich?

- ✓ Proven expertise – Over 90 years' of proven engineering technical expertise
- ✓ Dedicated team of qualified engineers strategically located nationwide
- ✓ Outstanding financial strength\*
- ✓ A Leading global insurer
- ✓ Operates in more than 215 countries and territories

**Please note that this is not an exhaustive list. There are many other items that come under the legislation. If you've any questions, please contact your local engineer if you're an existing customer or your local sales team representative for a quotation.**

### Zurich Engineering Inspection Services Ireland Limited

A private limited company incorporated in Ireland.

Registration No. 635875.

Directors: John O'Connor and Brian Scannell.

Registered Office: Zurich House, Frascati Road, Blackrock, Co. Dublin, A94X9Y3.

Intended for distribution within the Republic of Ireland.

\* Zurich Insurance Europe AG is owned by Zurich Insurance Company Limited, which has an internationally recognised financial strength rating of AA/stable.

GR: 8700 Print Ref: ZG GOSA 5763 0524

